

① FRONT ELEVATION  
1/16" = 1'-0"



② SIDE ELEVATION  
1/16" = 1'-0"

**w.e. bowman**  
construction, inc.  
1100 MONROE AVENUE  
MONTICELLO, VIRGINIA



**STUCKEY'S**  
TOANO, VA.

**SCHEMATIC  
ELEVATIONS**

JUNE 2, 2006  
Progress Drawings

Revision

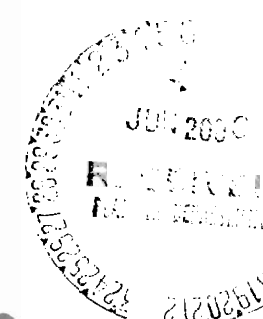
\_\_\_\_\_

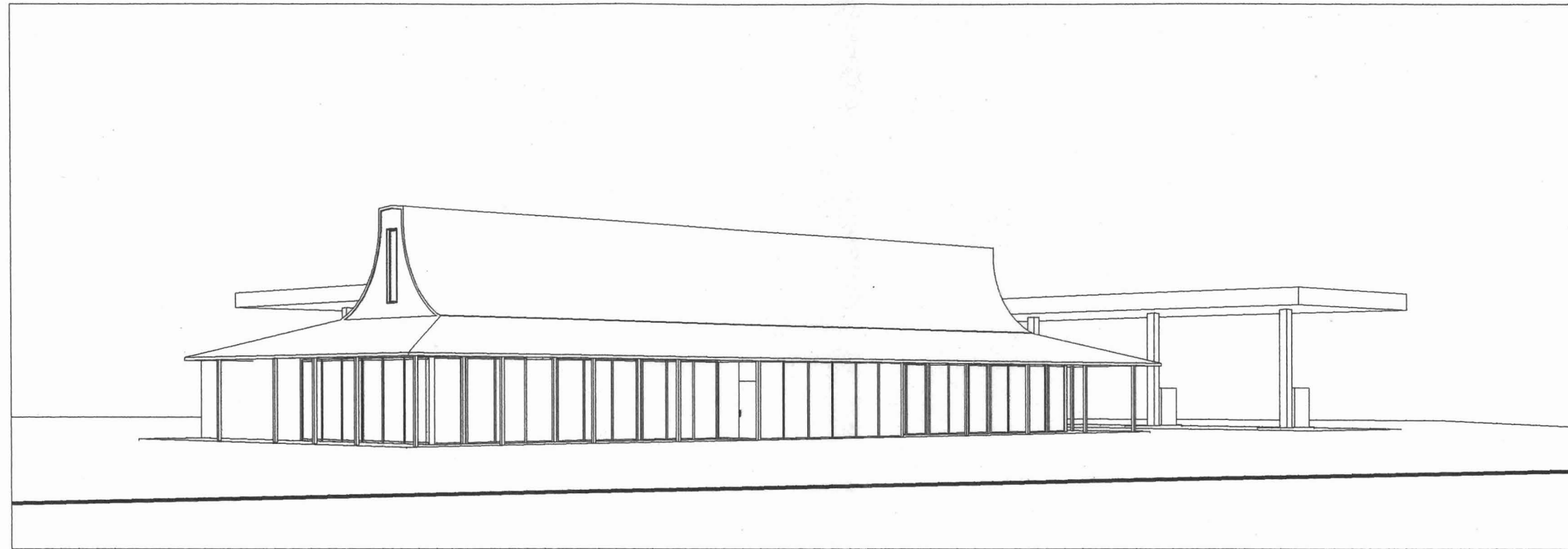
\_\_\_\_\_

**A2.01**

1/16" = 1'-0"

*Sup-18-06*





① VIEW GETTING OFF I-64 E



② VIEW FROM BARHAMSVILLE RD

**w.e. bowman**  
 construction, inc.  
 804-231-3899  
 RICHMOND, VIRGINIA



STUCKEY'S

TOANO, VA.

SCHEMATIC  
 PERSPECTIVES

JUNE 2, 2006

Progress Drawings

Revisions

\_\_\_\_\_

\_\_\_\_\_

A2.02



**STUCKEY'S**  
TOANO, VA.

**SCHEMATIC  
PERSPECTIVE**  
JUNE 2, 2006  
Progress Drawings

Revisions  
\_\_\_\_\_  
\_\_\_\_\_  
\_\_\_\_\_

**A2.03**



① VIEW FROM ENTRY DRIVE