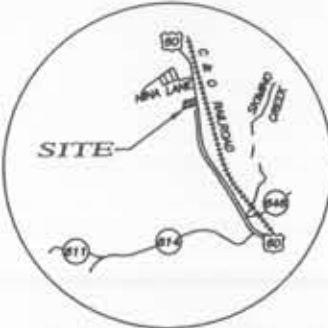
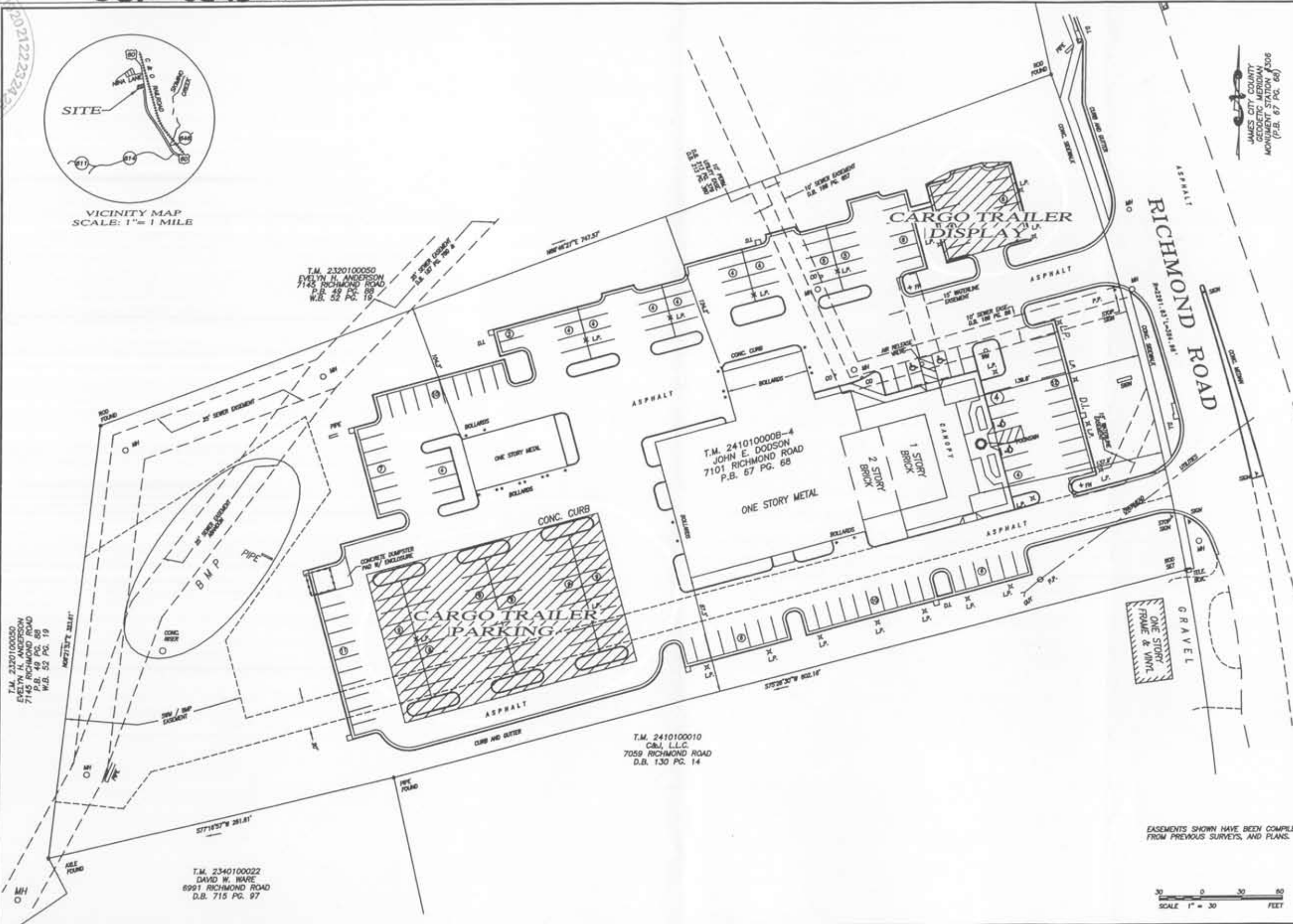


RECEIVED
SEP 2007
Planning Department

SUP 0026.2007



JAMES CITY COUNTY
GEOLOGIC MERIDIAN
MONUMENT STATION 4306
(P.B. 67 PG. 68)



REVISION #1
DATE
BY

REVISION #2
DATE
BY

REVISION #3
DATE
BY

REVISION #4
DATE
BY

MASTER PLAN FOR CARGO TRAILER
DISPLAY AND PARKING
WILLIAMSBURG
DODGE
POWHATAN DISTRICT
JAMES CITY COUNTY, VIRGINIA



POTTS, MINTER, AND ASSOCIATES P.C.
Engineers, Land Surveyors, Land Planners
3520 S. Courthouse Road Suite B Richmond, Va. 23256
Phone: (804) 745-2876 Fax: 745-9571

EASEMENTS SHOWN HAVE BEEN COMPILED
FROM PREVIOUS SURVEYS, AND PLANS.



T.M. 2340100022
DAVID W. WARE
6991 RICHMOND ROAD
D.B. 715 PG. 97

T.M. 2410100010
C&J, L.L.C.
7059 RICHMOND ROAD
D.B. 130 PG. 14

T.M. 241010000B-4
JOHN E. DODSON
7101 RICHMOND ROAD
P.B. 67 PG. 68

T.M. 2320100050
EVELYN H. ANDERSON
7145 RICHMOND ROAD
P.B. 49 PG. 68
W.B. 52 PG. 19

T.M. 2320100050
EVELYN H. ANDERSON
7145 RICHMOND ROAD
P.B. 49 PG. 68
W.B. 52 PG. 19

Supply as-built