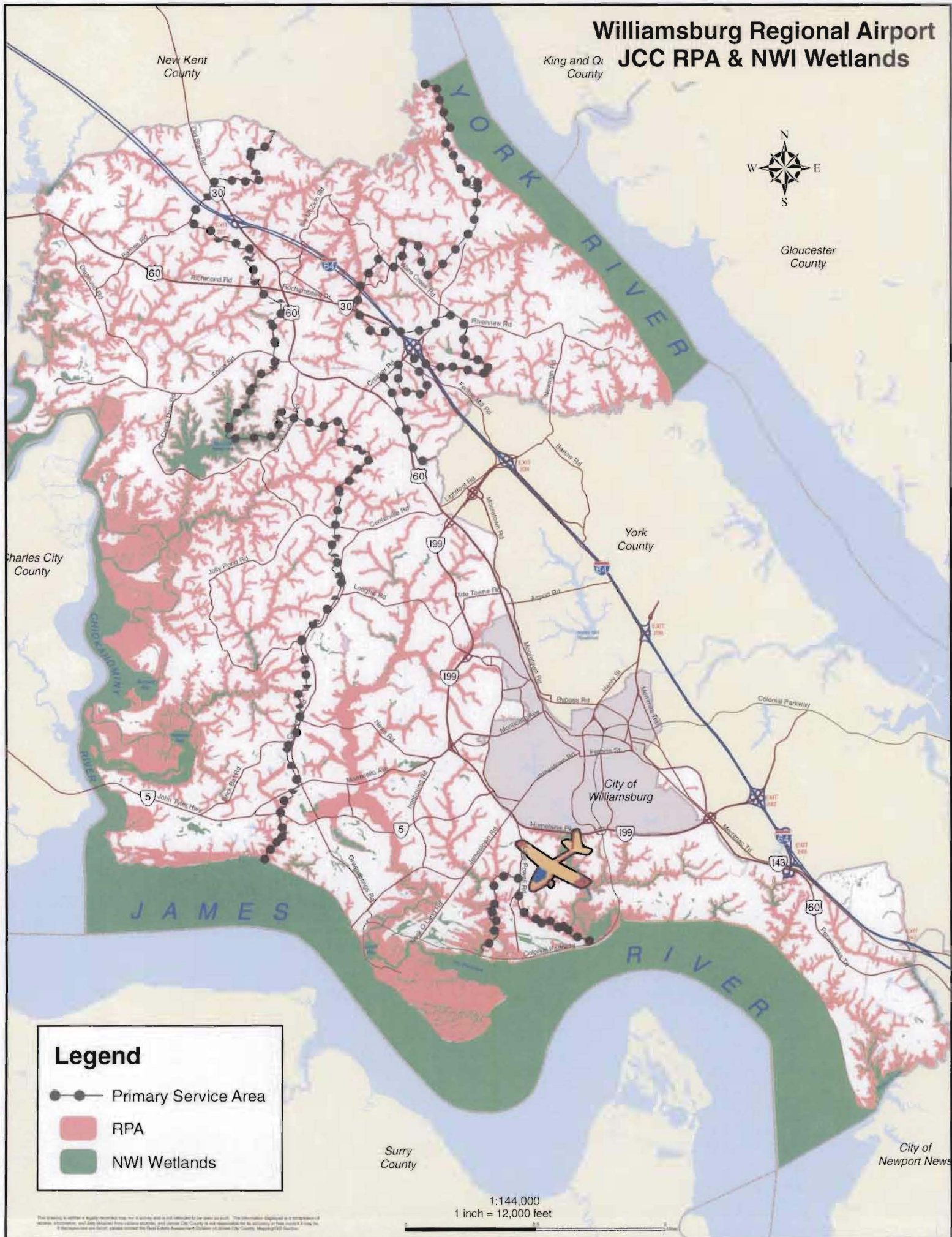


# Williamsburg Regional Airport JCC RPA & NWI Wetlands



## Legend

-  Primary Service Area
-  RPA
-  NWI Wetlands

1:144,000  
1 inch = 12,000 feet

This drawing is either a copy or a derivative of a drawing that is copyrighted by the State of Virginia. The information displayed on this map is a compilation of various information and data obtained from various sources, and James City County is not responsible for its accuracy or for any errors that may appear hereon. It is recommended that users consult the Base Aerial Photographs of James City County, Mapping GIS Section.