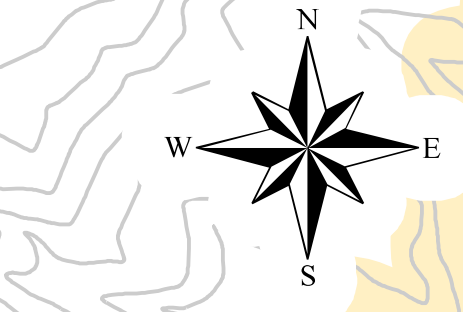




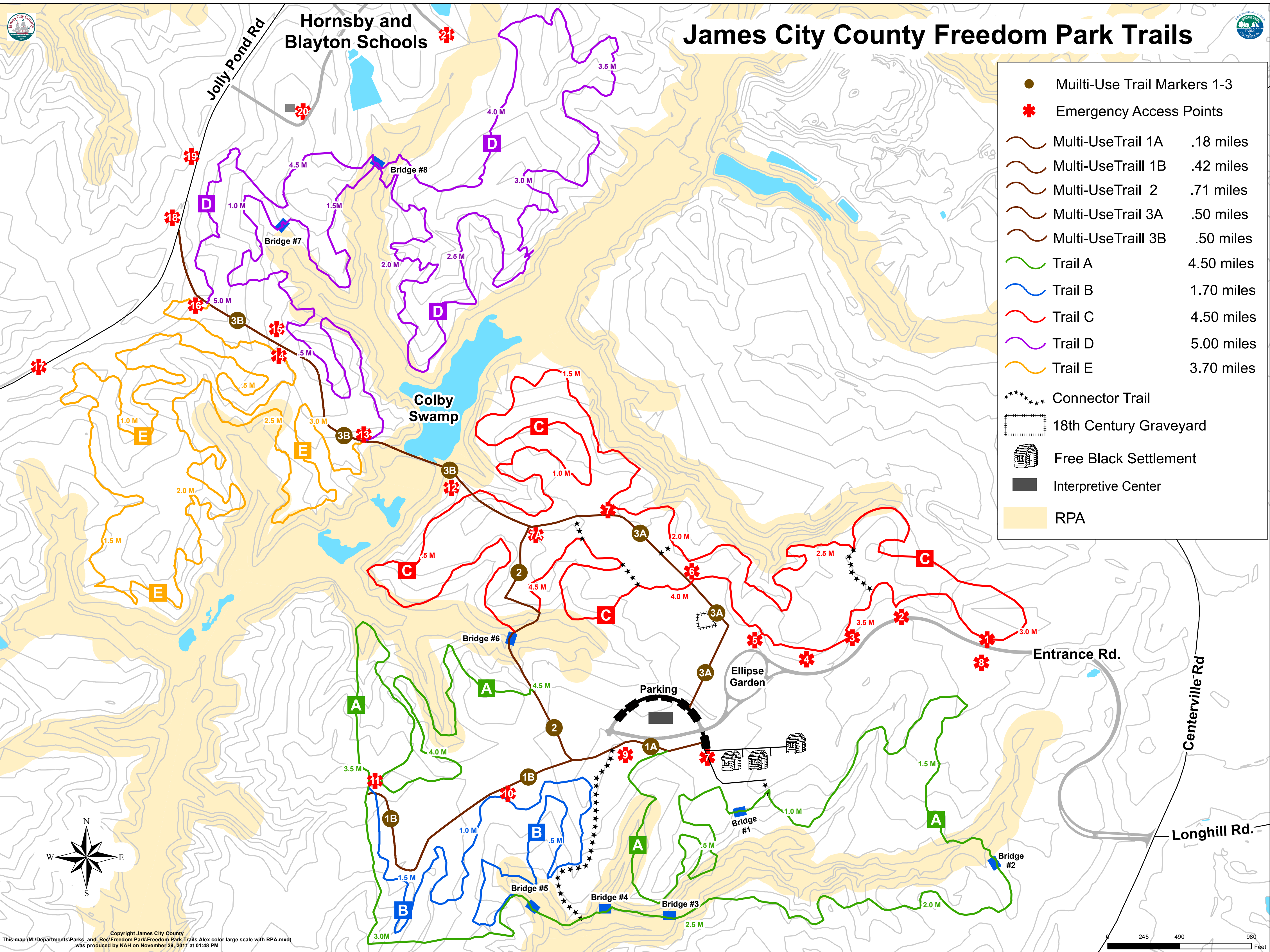
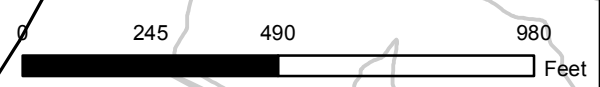
Hornsby and Blayton Schools

# James City County Freedom Park Trails

	Multi-Use Trail Markers 1-3
	Emergency Access Points
	Multi-Use Trail 1A .18 miles
	Multi-Use Trail 1B .42 miles
	Multi-Use Trail 2 .71 miles
	Multi-Use Trail 3A .50 miles
	Multi-Use Trail 3B .50 miles
	Trail A 4.50 miles
	Trail B 1.70 miles
	Trail C 4.50 miles
	Trail D 5.00 miles
	Trail E 3.70 miles
	Connector Trail
	18th Century Graveyard
	Free Black Settlement
	Interpretive Center
	RPA



Copyright James City County  
This map (M:\Departments\Parks\_and\_Rec\Freedom Park\Freedom Park Trails Alex color large scale with RPA.mxd) was produced by KAH on November 29, 2011 at 01:48 PM



# Welcome to the Trails at Freedom Park

## Mountain Bike Trails

The trails consist of five loop style single track trails which intersect multi-use trails at various points. All five trail loops are considered **BLUE** in difficulty rating due to unavoidable obstacles on the trails. The beginning of each trail is marked with a sign:



The following is a short description of each trail:

**Trail A** This trail is approximately 4.5 miles long. There are several bridges which are considered BLUE in difficulty, a few log piles and one 5' dirt drop off. Log piles and the dirt drop off all have bypasses (alternate route around obstacle). This trail can be ridden by riders with modest ability provided they travel at a safe speed based on their skill level. First time riders may desire to walk a section or two.

**Trail B** This trail is approximately 1.7 miles long and is accessed right after Bridge # 3 from Trail A and ends at the intersection of Trail A and the multi-use trail. This trail is slightly more challenging than Trail A and is also considered BLUE in difficulty. The trail is tighter and has several sharper turns. Riders of modest skill level can cycle this trail but may have to stop at times.

**Trail C** This trail is approximately 4.5 miles long and has something for everyone! This trail is also considered BLUE in difficulty. It is accessed from the multi-use trail just after passing Bridge #4 on the left. There are approximately 30 technical features on the trail consisting of ladder drops, teeters, table tops, dirt moguls, skinnies, log bridges, and a half moon. All technical features have bypasses so riders of all levels can ride Trail C.

**Trail D** This trail is approximately 5.0 miles long and is accessed by taking Multi-Use Trail #4 across the Colby Swamp Dam. The trail entrance is on the right after crossing the dam. The trail has a lot of slopes, tight turns, several switch backs, and two bridges. The trail has a BLUE difficulty level.

**Trail E** This trail is approximately 3.7 miles long and is accessed by taking Multi-Use Trail #4 across the Colby Swamp Dam. The trail entrance is near the end of the Multi-Use Trail #4 across from the Trail D exit. The trail has a lot of slopes, tight turns, and several switch backs. The trail has a BLUE difficulty level.

**Bridges and technical features (obstacles) are rated and marked based on difficulty using the signs below:**



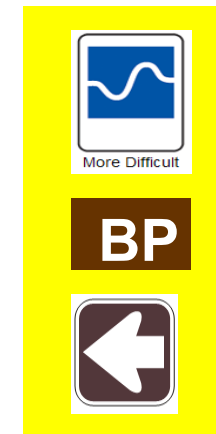
Used for unavoidable obstacles including log pile, bridges (36" or wider) and dirt mounds. Beginners-show some caution.



Used for bridges 24" - 35" and technical trail features 24" high or less. Beginners-scout the feature first!



Used for bridges 23" or less and technical trail features 48" and higher. Experts only!



**Bypasses (BP)** to technical trail features are noted with "BP" and a directional arrow indicating which way to go to avoid the feature

**Trails are marked with the following signs on colored posts:**



**Mountain Bike Trails** are marked with yellow posts  
Trail letters correspond to those on the trail map  
Mileage markers are provided at different locations on the trail  
Directional arrows are provided at intersections and other areas as needed



**Connector Trails** are marked with orange posts and "CN" letters  
Directional arrows are provided to show the direction to parking or trail connections



**Multi-Use Trails** are marked with brown posts and Hike and Biker signs.  
Multi-Use trails are labeled with number from 1 to 5 which correspond to the trails on the map  
Mileage marks are provided at different locations and intersections traveling from the parking area to the trail ends.



## Mountain Bike Trail Use



Look for the Trails Open/Closed sign before starting your ride. Please stay off the trails when they are closed.

- Mountain biking is dangerous and can cause serious injury or death. Riders should wear helmets and protective eyewear at all times
- Ride within your ability. Ride in pairs. Ride with a cell phone. Ride with a whistle.
- Keep your bike under control at all times.
- Trails A and C are ridden clockwise, Trails B, D & E are ridden counter clockwise. Look for directional arrows on the trail markers.
- Mountain bike trails intersect multi-use trails. Be on the lookout at all times while riding.
- Bikers yield to hikers on multi-use trails.
- Walkers/runners are to travel bike trails in the opposite direction of riders. Walkers/runners yield to bikers while on bike trails. Wear bright colors while walking or running on bike trails.
- Stay on the trail. Riding off trail damages vegetation which lead to erosion. Ride through puddles-NOT around. Help protect our trails.
- Leave no trace. Carry out all waste. Help keep our trails and parks clean. Pick up what you see.
- If you are riding solo, let someone know where you are and when you will be back.
- Plan your ride. The park closes at sunset. Make sure you will be back before then.



## Multi-Use Trail Use

- Multi-use trail markers mileage marks along each trail at various locations.
- Multi-use trails intersect mountain bike trails. Be aware at these intersections.
- Check for ticks at completion of your hike/walk/run.
- Leave no trace. Carry out all waste. Help keep our trails and parks clean. Pick up what you see.
- If you are hiking/walking/running solo, let someone know where you are and when you will be back.
- Plan your hike/walk/run. The park closes as sunset. Make sure you will be back before then.

**Always know which trail you are on and where you are located on the trail.  
This is very important in the event of an emergency!**